



NEWSLETTER

31ST JANUARY 2025

WELCOME

We would like to welcome two new members of staff: Catherine Howarth and Fathima Liyakathali. Both members of staff will be joining our Inclusion Team and we are very much looking forward to welcoming them as part of our Cherry Tree team!

We would like to extend a huge congratulations to Mrs Malhotra and Miss McCafferty for successfully completing and passing their National Professional Qualification in Leading Teaching. We are very proud of our teachers for completing this study over the last 12 months. Well done!

Please may we remind you that no dogs are allowed on the school site, under any circumstances. This includes being held in arms or in buggies. This of course does not include Bonnie, our school dog, who has had relevant training, risk assessments and insurance. Thank you.

On a similar note, please let us remind you that there are to be no scooters or bikes on the playgrounds. At busy times, we do not want any accidents. Thank you.

Thank you to all our parents for contributing to our parent survey, we have had a positive response and we look forward to informing you of our next steps following this feedback. We appreciate the time you have given this.

We are very proud of our Computing Ambassadors who attended the BETT show in London last week with Miss Byrne and Mrs Crocket. The team of children were researching the latest technology available to schools and are going to help me make decisions for our future. We were very proud of their bravery and passion.



We had a wonderful Cherry Week last week, celebrating all things wellbeing. Please have a look at the Twitter/X feed of your child's class teacher and the school account to see what we got up to.

Cheska Tyler
Headteacher

DATES FOR YOUR DIARY

- 04/02/25 - NHS Mental Health Drop in session in the Hub (9 - 10am)
- 06/02/25 - EYFS Parent Workshop Maths (Zoom)
- 06/02/25 - Year 5 PE Tournament
- 07/02/25 - NSPCC Number Day
- 14/02/25 - Last Day of Term (School finishes at 3:15pm)
- 24/02/25 - First day of Spring 2 Term
- 04/03/25 - Year 6 Secondary Transition Meeting with Lisa Sillitoe from DSPL9 (1:15pm - 3:15pm)

FREE COMMUNITY SESSIONS

Two new free community sessions for families are launching this month.

- The Happy Club runs every Tuesday at Christ Church on St Albans Road, from 9.30am. It offers a relaxed environment for parents and children to enjoy refreshments and informal conversations while children play.
- The Happy Club Munch Bunch is held at St Marks church on Leggatts Way, every Sunday at 12:30PM. These monthly sessions include a free lunch and activities for families.

Both initiatives aim to foster community connections and welcome all families without the need for booking. For more details, [contact Revd Vicki Davies](#) at Christ Church and St Marks Watford.

GREEN CHERRIES MAKE A DIFFERENCE

Our Green Cherries Eco-Council has been busy! During one of their weekly meetings, they discussed the importance of protecting endangered species and decided to take action by adopting an animal!

After some thoughtful research and voting, the children chose not one, but two incredible animals to support: Snowflake the Snow Leopard and Ronald the Rhino! As part of their adoption, they receive regular updates from WWF about the amazing conservation efforts helping to protect these animals and their habitats.

Would you like to make a difference too? You can adopt an animal and join in the effort to protect endangered species. Visit the [WWF website](#) to find out more!



We are kind, we aim high, we are brave!

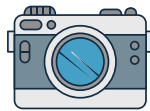
BOOK CORNER

Last weekend it was the Big Garden Bird Watch which is one of my favourite nature activities. Taking an hour out of our busy lives to watch and record the beautiful and fascinating birds, visit a garden or park is a great way to tap into our 5 ways of wellbeing (take notice, learn, be active, connect and give).

To read more about our amazing British Birds, [visit the RSPB website](#) or read some of my favourite bird themed books.



Happy Reading
Emma Hill
Class Teacher/ English Lead



SCHOOL PHOTOGRAPHS

The deadline to order school photographs is 12th February 2025. The easiest way to order is to go online by [clicking this link](#) and choosing the green 'Order School Photos' button - you will need the unique barcode and passcode located under your child's photo in their pack. Alternatively, you can bring your order sealed in an envelope, with the correct payment, to the school office.

NURSERY ADMISSIONS 2025-26

The deadline for applications for Nursery class admissions for September 2025 is 1st of March 2025. For more information about Nursery Admissions [please click this link](#).

KEEPING CHILDREN SAFE

Please be aware of our designated safeguarding team here at Cherry Tree. If you ever have a concern about a child, family or staff member in our school, please contact one of these members of staff: Emma Hibberd (Assistant Headteacher), Katy Wolstencroft (Deputy Safeguarding Lead) Cheska Tyler (Headteacher), Vicky Carrack (Inclusion Leader & SENDCo), Emma Birdsall (EYFS & KS1 Lead), Emma Penfold (KS2 Lead), Jo Crocket (Pastoral Leader) or Sarah Wickham (Wrap Around Leader) .



PLEASE STOP



SPEAK OUT



DON'T TOUCH

INCLUSION UPDATE

YOUNG AUTHORS

We congratulate all our Writers of the Month listed below - we have been blown away by their creativity!

Berries	Sharian and Saniya	Hazel	Buster
Acorns	Kesika	Ash	Maja
Conkers	Alyssa	Yew	Theia
Maple	Ivy	Pine	Ibrahim
Birch	Noah	Fir	Ria
Cedar	Hasti	Oak	Uthman
Willow	Muhaddisah	Elm	Mahdiya
Sycamore	Ava		

Please ask your child's teacher if you'd like to come and see the display!

What we are learning.....

For EYFS, please see updates on your weekly letters and Tapestry.

Year 1

Writing - fact pages about farm animals.

Phonics - learning all the ways to spell /oo/ (unit flew blue cube moon fruit soup) /ee/ (sea he even field key happy feel) /oa/ (snow toe shoulder bone so road).

Maths - Addition! Understand the + symbol, = symbol and show how addition can be done in any order.

Science – identify animals that are part of a group (mammals, birds, carnivores, herbivores).

Wider Curriculum – how does the food go from farm to fork?

Year 2

Writing - diaries using 'Dougal's Deep Sea Diary' by Simon Bartram.

Maths - 2D & 3D shapes and identifying lines of symmetry.

Science – how Arctic & Desert animals adapt to survive in extreme habitats.

Wider Curriculum – Migration & Threats: why animals move and the dangers they face.

Reading – 'Esio Trot' by Roald Dahl.

Year 3

Writing – stories based on 'Lost and Found' by Oliver Jeffers.

Maths - multiples of 3, 4 & 8 and using our times table facts to solve division facts using inverse.

Science - learning about magnets and investigating the strength of different magnets.

Wider Curriculum - learning about space exploration.

Guided Reading – 'Bill's New Frock' by Anne Fine.

Year 4

Writing – explanation texts on the water cycle.

Maths - looking at money and adding and subtracting fractions with the same denominator.

Science - continue to look at the water cycle, where sources of water are formed with a focus on rivers.

Wider Curriculum - looking at how temperature can cause a change of state and the process of evaporation.

Guided Reading - 'James and the Giant Peach' by Roald Dahl.

Year 5

Writing – re-writing Alfred Noyes 'The Highwayman' as a narrative.

Maths – converting units of measure and exploring all 4 operations to solve problems.

Science - exploring the phases of the moon and giving an expert talk about Space.

Wider Curriculum - using digimaps to explore satellite images and discover how the Moon and tides are linked.

Guided Reading – 'The White Giraffe' by Lauren St James.

Year 6

Writing - using emotional timelines to write letters using emotive language.

Maths - exploring translation and reflection and multiplying and dividing fractions.

Science - is white light truly white? Using light to send Morse code.

Wider Curriculum - understanding the benefit to humans of natural light and exploring how cameras work.

Guided Reading - 'Cloudbusting' by Malorie Blackman.

Reminders

- Thank you to all the parents/carers that have downloaded SwiftKitchen. After discussion with the children we have decided to amend the menu for the rest of the term, so all meal orders after this week have been removed and we kindly ask that you discuss the new menu options with your child/ren and order their meals. Please remember to checkout your basket even if the cost is £0.00.
- 6th February - Year 5 - PE tournament. Please make sure they have their PE kit in school



TOP CHERRIES



Our Top Cherry Award is an award to celebrate exceptional behaviour, learning or manners. These children really are going above and beyond!

Class	Child's Name	Reason
Lunchtime	Ghezal	For spending the whole of lunchtime outside, happily playing with your peers, well done Ghezal.
Sunrise/Sunset	Aara (RA)	For amazing craft work, great independence, and perseverance.
Fireflies	Anika (Willow)	For being brave and sharing which activities she had been doing with others whilst at forest schools. Well done Anika.
Cherry Blossoms	Isaac	For aiming high and showing good listening during story time.
Berries	Millie	For always working hard and following the class rules.
Acorns	Jaian	For aiming high and persevering with your blending in phonics.
Conkers	Mini	For aiming high and showing more confidence when blending in phonics!
Maple	Umar	For Super fact writing!
Birch	Ayah	For aiming high in lessons and working hard to explain your thinking.
Cedar	Ezmarelda	For brilliant effort in handwriting!
Willow	Alyssia-River	For being such an understanding and thoughtful friend.
Sycamore	Mehdi	For becoming a good role model in Sycamore class.
Hazel	Dominic	For asking questions and making friends!
Ash	Olivia	For making a great improvement to her attendance and working hard in every lesson.
Yew	Riaan	For always working hard and producing a high level of work.
Pine	Muizz	For always aiming high and persevering in lessons!
Fir	Jamal	For an improved attitude towards learning and aiming high in Maths! Well done, Jamal.
Oak	Fiona	For always being so helpful, kind and respectful and being a role model for your peers.
Elm	Daksha	For consistently living the values and being amazing!

Well done, Cherries!



Tel
01923 245490

Email
admin@cherrytree.herts.sch.uk

Web
www.cherrytree.herts.sch.uk

Twitter
CTS_Watford

Facebook
Cherry Tree Primary School

INCLUSIVE | MAT